



Sea to Sky Gondola

SQUAMISH EAGLE WATCHING

January 19, 2021 – 4 Days

British Columbia has almost half of the world's bald eagle population and Squamish, just 45 minutes north of Vancouver, boasts the second highest bald eagle count in the world and one of the most densely populated gatherings in North America. Annually over 3,000 eagles flock to the Squamish and Cheakamus Rivers from Alaska and the Yukon, staying from mid-November to mid-February to feed on the abundance of spawned chum salmon. The largest gathering was 3,766 eagles, counted in January 1994 and coinciding with the four-year cycle of salmon spawning. Along with the eagle migration come the avid bird watchers and hikers who walk along the banks of the river, enamored with the powerful birds. One of the quietest and most interactive ways to view the eagles is from the river. Using expedition-class river rafts, we float quietly down the Squamish River wearing warm and cozy survival suits with boots. Next day, we visit the George Reifel Migratory Bird Sanctuary, one of Vancouver's premier birding locations, which is home to thousands of birds each winter.

Activity Level: 2



4 Meals Included:

4 lunches

Fares:

\$1,220 pp double/twin, \$1,420 pp single, \$1,180 pp triple

Please add 5% GST

Early Bookers Discount:

\$70 discount on first 10 seats; \$35 on next 6

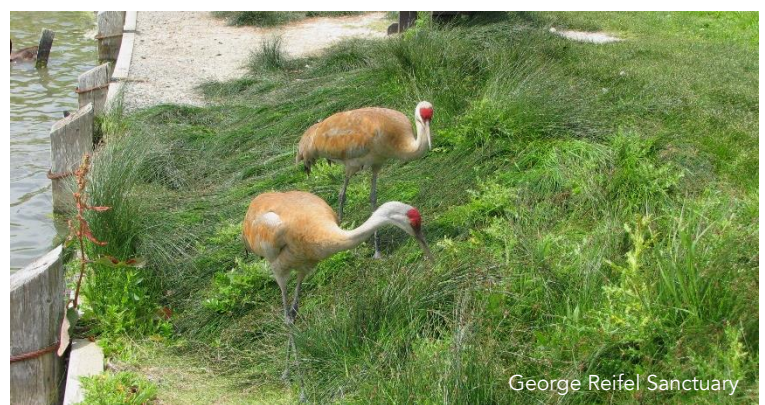
Experience Points:

Earn 29 points from this tour

Redeem 29 points if you book by December 4

TOUR

30



George Reifel Sanctuary

ITINERARY

Day 1: Tuesday, January 19

We drive to Vancouver and stay three nights at the Georgian Court Hotel. It has a great location in downtown Vancouver at the east end of Robson Street.

Meals included: Lunch

Accommodation: Georgian Court Hotel

Day 2: Wednesday, January 20

We follow the scenic Sea-to-Sky Highway north along Howe Sound to **Squamish**. We enjoy a two-hour floating trip on the Squamish River to enjoy terrific **viewing of the eagles** roosting in the tops of the cottonwood trees or feeding beside the river. A full survival suit with boots is provided for your comfort and safety. As you gently float down the river, the knowledgeable river guides talk about the life cycle of the bald eagle and the salmon they depend on, along with the interesting flora and fauna. This afternoon, we visit the inspiring Brackendale Art Gallery which has wonderful exhibits featuring BC artists. Later, we ride the **Sea to Sky Gondola** which whisks us from sea level to the mountaintop lodge in 8-person gondolas. From the decks, there are panoramic views of nearby peaks, Howe Sound and Squamish.

Meals included: Lunch

Accommodation: Georgian Court Hotel

Day 3: Thursday, January 21

We visit **George Reifel Migratory Bird Sanctuary**, a premier birding area situated on one of the islands of the Fraser delta. It consists of 1,600 acres of tidal marshes, mud flats and grass habitats, and is the winter home to thousands of ducks, swans, loons, cormorants, grebes, raptors, lesser snow geese, and passerines. Lunch is in nearby Steveston. The afternoon is free time in Vancouver. This evening, we go to the Queen Elizabeth Theatre to see the musical, **Anastasia**. The show is based on the 1997 film and adapts the legend of Grand Duchess Anastasia Nikolaevna of Russia. Six songs from the movie were kept in the musical, but 16 songs were added, so it is really a new production. It opened on Broadway in 2017 and played for two years. Anastasia was nominated for numerous awards including two Tony Awards, nine Drama Desk Awards, two Drama League Awards, and 12 Outer Critics Circle Awards, and won three.

Meals included: Lunch

Accommodation: Georgian Court Hotel

Day 4: Friday, January 22


We journey home from Vancouver.

Meals included: Lunch

WHAT'S INCLUDED

- Coach transportation for 4 days
- 3 nights hotel accommodation and taxes
- 2-hour eagle watching float on Squamish River
- Sea to Sky Gondola
- Brackendale Art Gallery
- George Reifel Bird Sanctuary with naturalist
- *Anastasia* at Queen Elizabeth Theatre
- Gratuities for rafting guide and naturalist
- Knowledgeable tour director
- Luggage handling at hotel
- **4 meals:** 4 lunches

TOUR 30 Tour 30: This is a Tour 30 departure, meaning capacity of tour is limited to 30 participants or less, a more intimate travel experience.

 **Activity Level 2:** Moderate activity including short distances to walk and some stairs. You must be able to get into and out of a large river raft with some assistance, and the shoreline can be slippery in winter. There is walking in the Reifel Sanctuary to see the birds. The coach cannot carry a scooter. If you think you may have difficulty participating in Activity Level 2, Wells Gray Tours recommends that you bring a companion to assist you. The tour director and driver have many responsibilities, so please do not expect them, or your fellow travellers, to provide ongoing assistance. If you are not capable of keeping up with the group or require frequent assistance, the tour director may stop you from participating in some activities or some days of the tour.

TOUR POLICIES

Payments: A deposit of \$150 per person is requested at the time of booking and balance is due December 4, 2020. By paying the deposit, you agree to the Terms & Conditions, Activity Level and Cancellation Policy outlined.

Discounts: Early bookers receive \$70 discount on first 10 seats and \$35 on next 6 seats for booking early with deposit. The discount is not offered after December 4.

Cancellation Policy: Up to October 1, 2020, your tour payments will be refunded less an administrative charge of \$50 per person. From October 2 to December 4, the cancellation charge is \$150 per person (your deposit). From December 5, 2020 to January 4, 2021, the cancellation charge is 50% of the tour fare. After January 4, there is no refund.

Fare Changes: Changes to taxes and surcharges from tour suppliers can occur at any time and are beyond the control of Wells Gray Tours, therefore Wells Gray Tours reserves the right to increase fares due to such changes up until the time of departure.

Travel Insurance: A Comprehensive Insurance policy is available through Wells Gray Tours and coverage is provided by Travel Guard. Policies purchased at deposit include a waiver of the pre-existing condition clause for medical and cancellation claims, otherwise policies can be purchased no later than at final payment. Please contact us for details.

Photo Credits: Eagles (Adobe Stock), Gondola (Sea to Sky Gondola Squamish), Sandhill Cranes at the George Reifel Migratory Bird Sanctuary (Wikipedia).

Experience Points: This tour earns 29 e-points. Each time you travel on a Wells Gray tour, you earn Experience Points, or e-points. One e-point equals \$1. Redeem your points on select tours or accumulate enough points to earn a free tour! Redemptions offered until December 4, 2020.

Consumer Protection BC Licences: Kamloops 178, Vernon 655, Kelowna 588, Penticton 924, Victoria 65842

KAMLOOPS
(Head Office)
250 Lansdowne St.
Kamloops, BC V2C 1X7
250-374-0831
Office Hours:
8:30am to 4:30pm
Mon, Tues, Thurs, & Fri
Weds 9:00am to 4:30pm
Closed holidays &
weekends

KELOWNA
2575 Richter St.
Kelowna, BC V1Y 2R1
250-762-3435
Office Hours:
9:00 am to 4:00 pm
Closed holidays &
weekends

VERNON
3206 35th St.
Vernon, BC V1T 6B7
250-545-9197
Office Hours:
9:00 am to 4:00 pm
Closed holidays &
weekends

PENTICTON
100-159 Wade Ave East
Penticton, BC V2A 8B6
250-493-1255
Office Hours:
9:00 am to 4:00 pm
Closed holidays &
weekends

VICTORIA
102-736 Broughton St.
Victoria, BC V8W 1E1
250-590-7889
Office Hours:
8:30 am to 4:00 pm
Closed holidays &
weekends

WE PLAN. YOU PACK. NO WORRIES!

www.wellsgraytours.com

1-800-667-9552