



Cruising on the Douro

**WELLS GRAY TOURS**  
a world to experience



## 51<sup>st</sup> ANNIVERSARY CRUISE ON DOURO RIVER

May 14, 2023 – 16 Days

*Small ship cruising on Emerald Radiance*

Come and join Wells Gray Tours and the Neave Family as we celebrate 51 years since the very first tour to Wells Gray Park in 1972. The 51<sup>st</sup> Anniversary is on board the *Emerald Radiance* while cruising the beautiful Douro River in Portugal. This intimate ship carries only 112 passengers, and was built in 2017. Along the Douro, the enchanting countryside has terraced vineyards rising from the shores, historic landmarks dating back 1,500 years, superb wineries at every stop, and delightful walkable towns.

The tour begins with four nights in Lisbon, the cosmopolitan capital of Portugal, then travels up the coast to Porto at the mouth of the Douro River. The 7-day cruise has many wonderful experiences such as the charming baroque village of Lamego, Spain's walled city of Salamanca, learning about Portuguese cooking or Port Wine, strolling through vineyards, or absorbing Portugal's fascinating history. What a way to celebrate Wells Gray Tours' 51<sup>st</sup> Anniversary!

Activity Level: 2



**36 Meals Included:**

13 breakfasts, 11 lunches, 12 dinners

**Fares Per Person:**

\$10,725 twin; \$14,795 single - Emerald Deck F (window)

\$10,740 twin; \$14,810 single – Vista Deck C (balcony)

\$11,690 twin; \$16,445 single – Horizon Deck A (balcony)

Other cruise categories are also available.

Please add 0.3% GST.

**Early Bookers:**

\$300 discount on all bookings until May 13, 2022.

**Experience Points:**

Earn 190 points on this tour.

Redeem 190 points if you book by February 2, 2023.

**Departure from:** BC Interior



## EARLY BOOKING INCENTIVES!!

**"We can't wait, neither should you."**

Emerald Cruises has confirmed a block of staterooms for our 51<sup>st</sup> Anniversary celebration and they will be held until May 13, 2022. River cruises are extremely popular and most are sold out long before departure, so you should not wait to book this tour. After all, the ship carries only 112 people and it doesn't take long to sell out a small ship like *Emerald Radiance*.

Some customers tell us that they don't like to book a tour over a year before departure because there could be health issues or family commitments that arise. If something changes up to 6 months before sailing, your cost to cancel is only \$100 per person.

**After May 13, 2022, Emerald will recall our unsold staterooms and it is unlikely that we can secure more.**

**Here are some compelling reasons why you should book early for Wells Gray Tours' 51<sup>st</sup> Anniversary:**

**Book by Friday, May 13, 2022**

Everybody receives an early booking discount of \$300 per person.

**Book by Friday, April 22, 2022**

Everybody who is booked with deposit is entered in a draw to be held at 4 pm. The winner can choose:

1) an upgrade to the Owner's Suite on the *Emerald Radiance*

OR 2) an upgrade on the flight to and from Portugal into Business Class

**Book by Friday, May 13, 2022**

Everybody who is booked with deposit is entered in a draw to be held at 4 pm. The winner will receive the prize that is not selected by the April 22 winner.

**There are several benefits to booking by April 22!**

- If you win, you can choose the Owner's Suite or Business Class Flight. You may enjoy one more than the other.
- You will get 2 chances to win – on April 22 and May 13.
- There may be fewer people booked and your winning chances are better.

**Upgrade to the Owner's Suite on the *Emerald Radiance*.**

Enjoy one of the finest suites on the ship. A separate lounge and bedroom area allows the luxury of 285 square feet of space. Enjoy a complimentary continental breakfast, a drink from your fully stocked mini-bar, or sweet treats before bed. Your queen-size or twin bed is draped in high quality linens, plus you can select your preferred pillow from an extensive menu. A walk-in wardrobe makes unpacking a dream. You can even have four items laundered each day. In the morning, enjoy the perfect wake-up call with a fresh coffee from your Nespresso machine. Your luxurious bathroom features a shower complete with decadent toiletries, comfortable bathrobes, and slippers. The suite comes with an exclusive invite to dine at the Captain's Table one evening. Note that this prize is for an upgrade, so you still pay for the stateroom you originally booked.

**Upgrade to Business Class on the flight**

Have you ever boarded a plane and been a little envious as you walked through the Business Class section? Now you (and your room partner if you have booked double or twin) can enjoy that wide comfortable reclining seat, a fine selection of movies, excellent meals with drinks, attentive service, and probably a lay-flat bed (depends on the plane). At the airports, you have access to the comfortable business lounge until your flight is called.

## ITINERARY

### Day 1: Sunday, May 14

Transportation is provided to New Westminster and we stay overnight at the Inn at the Quay, overlooking the Fraser River. Meet your fellow travellers during a get-acquainted dinner.

**Note:** While it may seem unnecessary to travel to the Lower Mainland the day before your flight, the Coquihalla can have long closures or flights can be cancelled by weather which would cause a missed international flight.

**Meals included:** Lunch, Dinner

**Accommodation:** Inn at the Quay

### Day 2: Monday, May 15

The morning is leisure time and you may want to take a stroll along Westminster Quay. Our flight departs in late afternoon.

**Meals included:** Breakfast

### Day 3: Tuesday, May 16

We change planes in Europe and arrive in mid-afternoon in Lisbon. **Welcome to Portugal!** We stay four nights at the 4-star Lisboa Plaza Hotel, situated alongside the exclusive Avenida da Liberdade in the heart of the city. This family-owned hotel offers amenities such as a restaurant, lounge, fitness facility, wi-fi, and roof-top terrace. A welcome dinner is included.

**Meals included:** Dinner

**Accommodation:** Lisboa Plaza Hotel

### Day 4: Wednesday, May 17

Enjoy a leisurely morning, then an afternoon tour is planned. In the **Belém Quarter**, there is a visit to the impressive Monastery of Jerónimos. We also see the Tower of Belém and the Monument to the Discoveries (admissions are extra). All these structures celebrate the Golden Age of Portuguese Discoveries which began in the 15<sup>th</sup> century. We also visit the **National Coach Museum** which houses an important horse-drawn carriage collection from the 17<sup>th</sup>, 18<sup>th</sup>, and 19<sup>th</sup> centuries.

**Meals included:** Breakfast, Dinner

**Accommodation:** Lisboa Plaza Hotel

### Day 5: Thursday, May 18

We head south from Lisbon through **Serra da Arrábida Natural Park** which offers some of the most stunning coastal scenery in the Lisbon area. The highest point is the Serra do Risco which provides a panoramic view from 380 metres above the Atlantic Ocean. There is time for lunch at the picturesque fishing village of Sesimbra and a walk on the beach. In the afternoon, we continue to **Setúbal**, located on the northern bank of the Sado River estuary and once known for exporting sardines. We visit a vineyard and cellar with wine tasting at Azeitão, then return to Lisbon.

**Meals included:** Breakfast

**Accommodation:** Lisboa Plaza Hotel

### Day 6: Friday, May 19

We tour the ornate **Palace of Queluz**, built in 1747 as the summer residence for the Royal Family. We continue to **Sintra**, a UNESCO World Heritage village in the Serra da Sintra Mountains, noted for its many 19<sup>th</sup> century Romantic architectural monuments. A highlight is the **Palacio Nacional** which was the home of Portugal's ruling nobility from the 15<sup>th</sup> through the 19<sup>th</sup> centuries and is notable for its decorative state rooms. Later, we drive through Sintra Natural Park, past several amazing palaces, to **Cabo da Roca**, the westernmost point of continental Europe. Later, we enjoy a leisurely walk along the bay at the glamorous town of Cascais.

**Meals included:** Breakfast, Lunch, Dinner

**Accommodation:** Lisboa Plaza Hotel



Palace of Queluz



## Day 7: Saturday, May 20

We head north from Lisbon, stopping in **Coimbra** for a tour of its medieval buildings. It was the capital of Portugal from 1131 to 1255 and its university was established in 1290. We continue to Porto, at the mouth of the Douro River, where the ***Emerald Radiance*** is docked. We settle into our cabins, home for the next seven nights, and explore the four decks of the ship. Our first succulent meal in the dining room is served as we cruise upstream on the beautiful Douro River.

**Happy Anniversary**, Wells Gray Tours – 51 years to the day since the first tour!

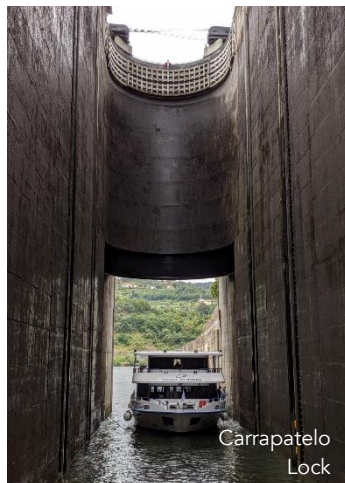
**Meals included:** Breakfast, Lunch, Dinner

**Accommodation:** *Emerald Radiance*

## Day 8: Sunday, May 21

Relax on board while enjoying a full day of tranquil scenes sailing through the Douro Valley. It is listed as a UNESCO World Heritage Site because of two millennia of wine producing history. Viticulture has shaped the surrounding landscape and quiet villages are surrounded by sun-drenched vineyards. In past centuries, the wine was taken downriver in flat-bottom boats called rabelos, to be stored in barrels in cellars in Vila Nova de Gaia, across the river from Porto. Nowadays, it is transported there in tanker trucks. We

pass three large dams today (Crestuma Lever, Carrapatelo and Régua) where the ship passes through locks, the highest being **Carrapatelo Lock** with a lift of 35 metres. Later, a Portuguese cooking demonstration is offered. Meet the captain and crew at a cocktail reception and savour a welcome dinner.



**Meals included:** Breakfast, Lunch, Dinner

**Accommodation:** *Emerald Radiance*

## Day 9: Monday, May 22

This morning, we visit the beautiful **Quinta do Tedo vineyard**, nestled at the confluence of the Douro and Tedo rivers. This 18<sup>th</sup> century estate is environmentally sound, creating organic produce

by using traditional viticulture methods. Alternatively, enjoy a guided walk through local vineyards or a kayak experience in Pinhão. Later, relax on the Sun Deck and enjoy all the passing scenery while we cruise to **Vega de Terrón**. Two more locks are experienced today, located at Valeira and Pocin-ho Dams. There are 15 dams on the Douro which regulate the water flow and generate hydroelectric power, and the lower five have locks for ships.

**Meals included:** Breakfast, Lunch, Dinner

**Accommodation:** *Emerald Radiance*



## Day 10: Tuesday, May 23

Vega de Terrón is on the Spanish border at the meeting of the Douro and Agueda Rivers. We drive east to the ancient city of **Salamanca, Spain**. Founded in Roman times, its World Heritage old quarter has an illustrious past, having been held by the Carthaginians, Romans, and Moors. A walking tour visits the picturesque galleries and arcades that adorn Plaza Mayor and the 15<sup>th</sup> century **Casa de las Conchas** which is decorated with over 300 shells. Back on the ship, we are entertained by a **tuna music band**. In Portugal, a tuna is a group of university students in traditional attire who play instruments and sing serenades. The tradition originated in the 13<sup>th</sup> century as a means for students to earn money or food.

**Meals included:** Breakfast, Lunch, Dinner

**Accommodation:** *Emerald Radiance*



### Day 11: Wednesday, May 24

Vega de Terrón is the head of navigation on the Douro. About 7 km upstream is Saucelle Dam which is 83 metres high with no locks. Heading downstream, we make some different stops than the upstream cruise. In **Pocinho**, there is a choice of a canoeing excursion or a visit to the Côa Valley Museum. Later, we admire the fabulous Douro scenery while sailing towards Régua and participating in a **Port Wine cocktail lesson**. A highlight of our week on the Douro is a rural dinner at the **wine estate of Quinta da Pacheca**.

**Meals included:** Breakfast, Lunch, Dinner

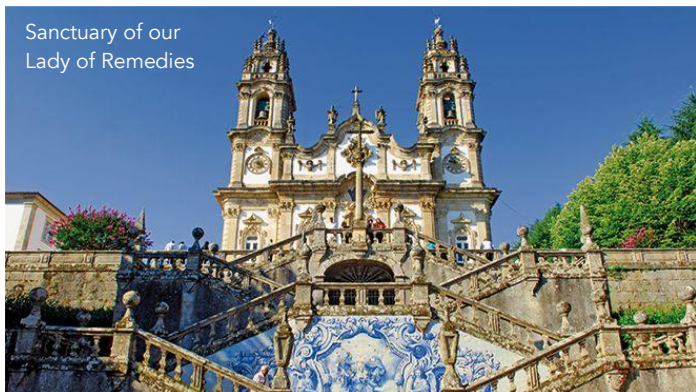
**Accommodation:** *Emerald Radiance*

### Day 12: Thursday, May 25

We drive from Régua to the marvellous Baroque village of **Lamego** which dates to the 7<sup>th</sup> century. The Cathedral was built in 1129. We also see the picturesque **Sanctuary of Our Lady of Remedies** which has stood gracefully above the town since 1750. To save climbing the 686 steps to the Sanctuary, the coach brings you to the top and you can walk down if you wish. During the afternoon cruise, there is a **mosaic tile painting lesson** offered.

**Meals included:** Breakfast, Lunch, Dinner

**Accommodation:** *Emerald Radiance*



### Day 13: Friday, May 26

The *Emerald Radiance* arrives back in Porto where the Douro flows into the Atlantic Ocean. **Porto** is a fascinating eclectic mix of modern and ancient architecture. Famous for its exports of Port wines, it's easy to imagine how British merchant ships would have once clustered together in the medieval harbour, waiting to take Port

wines across the water. A walking tour of historic highlights is arranged and you can choose to join the leisurely or active group. This evening, enjoy a charming **evening cruise** to view the illumination of Porto's skyline.

**Meals included:** Breakfast, Lunch, Dinner

**Accommodation:** *Emerald Radiance*



### Day 14: Saturday, May 27

We disembark the *Emerald Radiance* in Porto. A driving tour visits the Castelo da Foz which was completed in 1647 and guards the mouth of the Douro. Nearby is **Castelo do Queijo**, also built in the 17<sup>th</sup> century to protect the coastline, and its pentagonal façades overlook the ocean. We also take a stroll on the sandy expanse of Matosinhos Beach and see the Boavista Sports Club. The Bolhão market, Lello bookshop, Praça da Liberdade, and Rua das Flores are all convenient to our hotel. A farewell dinner is planned, so you can reminisce about the journey on the Douro and share photos of our many experiences.

**Meals included:** Breakfast, Lunch, Dinner

**Accommodation:** Hotel Infante Sagres

### Day 15: Sunday, May 28

Our flight leaves Porto in the morning and arrives in Vancouver in mid-afternoon.

**Meals included:** Breakfast

**Accommodation:** Westin Wall Centre YVR

### Day 16: Monday, May 29

We head home via the Coquihalla.

**Meals included:** Lunch



## DOURO RIVER

A symbol of Portugal's birth and growth as a nation, the Douro has long been the country's lifeline. The river rises in central Spain and flows generally west for 897 km through Spain and Portugal to its mouth at Porto, the second largest city of Portugal. The Douro forms the border between Spain and Portugal for 112 km. There are 15 dams on the Douro, built in the 1950s to 1970s, which regulate the water flow and generate hydroelectric power, and the lower five have locks for navigation. The Douro is the largest river, by volume, in the Iberian Peninsula.



River cruises have become increasingly popular around the world in the last 10 years, and it wasn't long before the potential of the Douro was noticed by the cruise lines. Several companies now provide cruises along the last 270 km of the river where it flows through Portugal. Above its confluence with the Agueda River, the Douro courses through narrow canyons in the Serra de Mogadouro Range and several high dams without locks block further ship traffic. In the lower Douro, accessible by cruises, the enchanting countryside has terraced vineyards rising from the shores, historic landmarks dating back 1,500 years, superb wineries at every stop, and charming walkable towns.

---

## WELLS GRAY TOURS' 51<sup>ST</sup> ANNIVERSARY

Fifty years in business is an achievement for any company. Wells Gray Tours founder and owner Roland Neave and his staff have long recognized the importance of celebrating anniversaries at Wells Gray Tours. The first one was the 14<sup>th</sup>, held in Reno in 1986, then every year after that until 1997, the 25<sup>th</sup>. We considered a quarter century to be quite a milestone, so we chartered the *Rotterdam* from Holland America, filled it with 1,100 enthusiastic customers, and sailed away from Vancouver for a special cruise route to Ocean Falls. Roland still remembers being really nervous about signing that big cheque!



1974 Wells Gray tour

After 1997, anniversaries were planned every 5 years, so they seemed more special than doing it every year. The 30<sup>th</sup> travelled to Banff Springs Hotel on the Rocky Mountaineer train. The 35<sup>th</sup>, 40<sup>th</sup> and 45<sup>th</sup> were on cruise ships with many special Wells Gray activities and 700-800 customers participating on each.

What to do for the 50<sup>th</sup> in 2022? Our staff were kicking around ideas starting 3 years ago and, when Covid reared its ugly head, they put on their well-worn thinking caps again. The initial extravagant plans were shelved since nobody could predict the end of the pandemic. So we went back to our roots and re-created the first tours of Wells Gray Park from 1972-75, albeit taking 3 days to do when it was once a day tour from Kamloops. We also announced that these 50<sup>th</sup> Anniversary tours would be the first of 5 years of events, taking us to our 55<sup>th</sup> Anniversary.

Now you are reading about our 51<sup>st</sup> Anniversary celebration. On May 20, 2023, 51 years to the day from the first Wells Gray tour, we will be boarding the *Emerald Radiance* in Porto, Portugal, for a wonderful cruise on the Douro River. Come and join the Neave Family on board for this momentous occasion.

## WHAT'S INCLUDED

- Transportation to/from Vancouver airport
  - Flight from Vancouver to Lisbon, Portugal
  - Current air transport taxes and fuel surcharges
  - Airline luggage fee for 1 suitcase per person
  - 7 nights of hotel accommodation and taxes
  - Transfer from Lisbon airport to hotel
  - Coach transportation for 5 days in Portugal
  - Multilingual guide on Portugal land tours
  - Half-day sightseeing tour of Lisbon
  - Monastery of Jerónimos
  - National Coach Museum
  - Serra da Arrábida Natural Park
  - Vineyard and cellar with wine tasting at Azeitão
  - Palace of Queluz
  - National Museum of Sintra
  - Sintra Natural Park
  - Cabo da Roca
  - Historic tour of medieval Coimbra
  - 7 nights on *Emerald Radiance* cruising the Douro from Porto
  - Cruise gratuities for the ship's crew
  - Port charges and cruise taxes
  - Portuguese cooking demonstration
  - Quinta do Tedo vineyard
  - Guided walk in vineyards or kayak experience
  - Transportation to/from Salamanca, Spain
  - Walking tour of Salamanca
  - Entertainment by a tuna music band
  - Canoeing at Pocinho or Côa Valley Museum
  - Port Wine cocktail lesson
  - Wine estate of Quinta da Pacheca with dinner
  - Tour of Baroque village of Lamego
  - Sanctuary of Our Lady of Remedies
  - Walking tour of historic Porto
  - Evening cruise of Porto skyline
  - Driving tour of Porto with Castelo da Foz
  - Castelo do Queijo
  - Transfer from Porto hotel to airport
  - Flight from Porto to Vancouver
  - Knowledgeable Wells Gray tour director
  - Gratuities for Portugal guides and drivers
  - Luggage handling at hotels and ship
  - **36 meals:** 13 breakfasts, 11 lunches, 12 dinners.
- 

## TOUR & CRUISE NOTES

**Currency & Expenses:** The Euro is the official currency in Portugal and Spain. You should have Euros on hand for smaller purchases and any gratuities not included. You can order Euros from your bank a week prior to departure. The currency on board the ship is the Euro. Purchases on board can be charged to your ship account and paid at the end of the cruise by credit card.

**Documentation:** A valid passport is required with sufficient blank pages and must not expire until three months after return date. Visas are not currently required for any country we are visiting.

**Gratuities** for cruise staff and European guides and drivers are included.

**Beverages:** In many countries outside Canada and USA, it is not standard practice to include beverages with tour meals. During the land portion of this tour, tea, coffee, or bottled water is usually included with each meal and other beverages can be purchased. On the ship, wine, beer, and soft drinks are included at lunch and dinner.

**Flight upgrades:** Please enquire about current prices for upgrades on the flights between Vancouver and Portugal. Premium economy and business class may be available.

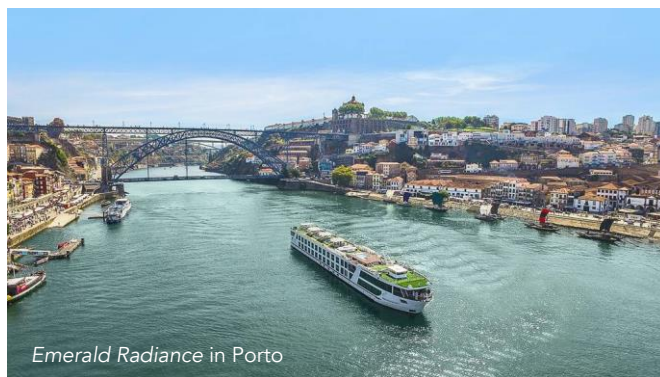
**Rooms for singles** are often a different style or smaller size than twin rooms in hotels (not on ship). Many hotels limit the number of single rooms for a group. Please book early if you prefer to travel single.

**Triples** are not available on this tour.

## MV EMERALD RADIANCE

Emerald Cruises launched the *MV Emerald Radiance* in 2017 and she was custom built for the Douro River and the northern Portugal climate. With just 56 staterooms and carrying a maximum of 112 passengers, the experience is intimate and deluxe. The ship is 89 metres long with four decks. Public areas include Reflections Restaurant, Horizon Lounge and bar with great views and comfortable furniture, an outside covered terrace with sitting area, a fitness centre, a hairdresser, and a huge partly shaded sun deck with sun beds and a pool. Wi-fi is complimentary. The floor to ceiling windows and French balconies on the Vista and Horizon decks make for bright staterooms with a contemporary design. Comfort is essential — dress code is relaxed and casual except the Welcome and Farewell dinners are a little more dressy. Dining has open seating with no reserved tables. You can choose a buffet or menu for breakfast in the dining room, or a light breakfast in the lounge. Complimentary wine, beer, and soft drinks are offered with lunch and dinner. Your cruise director keeps you informed about the daily entertainment, the upcoming lectures on ports of call, and various on-board activities to enrich your Douro experience. Two or three tours are offered at each stop and you choose one based on your activity level. Some of these tours are on a motorcoach and some are walking tours. Sometimes a paid excursion with more elaborate inclusions is offered; you can reserve on the ship or on the Emerald website 3 months before sailing (details in Important Tour Info at final payment).

There are 10 categories of staterooms. Category D, E and F are on the Riviera or lowest deck with picture windows and measure 153-170 square feet. Categories A, B, C, R and P are on Vista or Horizon decks and measure 160-180 square feet; they have floor to ceiling windows and the French balcony changes from an indoor to outdoor space with ease as the window lowers to a halfway point at the touch of a button. There are also two categories of suites measuring 285-300 square feet.



Emerald Radiance in Porto

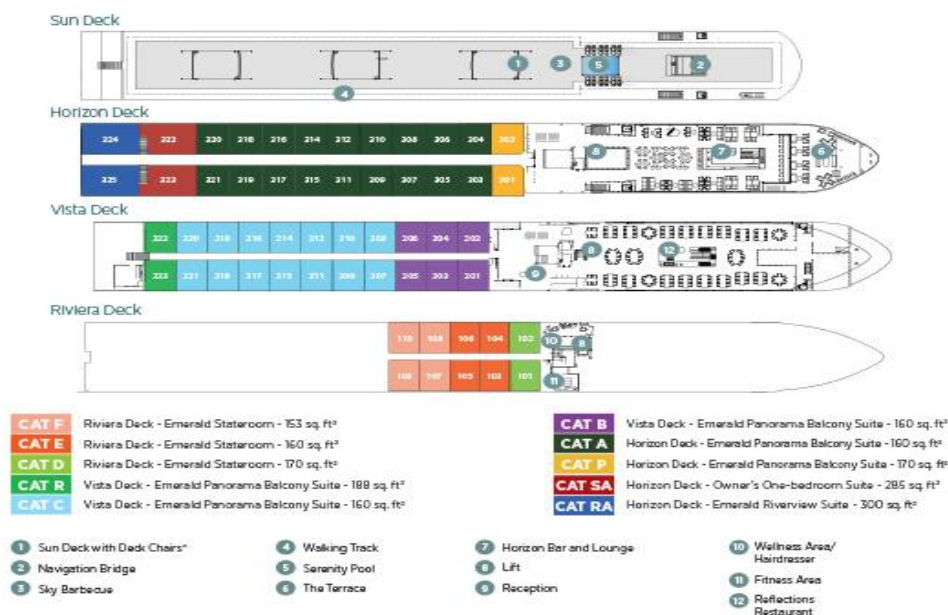


Horizon Lounge




Category B stateroom

### DECK PLAN





 **Activity Level 2:** Light activity on the ship and moderate activity during most shore excursions and pre- and post-cruise tours. Due to the historic nature of some attractions, it may be necessary to climb stairs, walk on uneven surfaces such as cobblestone streets, and walk up to a kilometre at an easy pace. Choose shore excursions based on your ability. Sometimes the coach cannot drive all the way to an attraction. There is an elevator on the ship that connects Riviera, Vista, and Horizon decks, but not Sun Deck or there are stairs between the dining room, lounge, and your stateroom. There can be longer walks in the airports so you should request a cart or wheelchair in advance or at check-in if this could be an issue for you. The coaches and ship cannot carry a scooter or motorized wheelchair. If Activity Level 2 could be challenging, you are urged to bring a companion to assist you. The tour director, local guides, and drivers have many responsibilities, so please do not expect them, or your fellow travellers, to provide ongoing assistance. Please consider these mobility issues prior to booking this tour. If you are not capable of keeping up with the group or require frequent assistance, the tour director may stop you from participating in some activities or some days. In extreme situations, you may be required to leave the tour and travel home at your own expense; travel insurance will probably not cover you.

---

## TOUR POLICIES

**Payments:** A deposit of \$900 per person is requested at the time of booking and the balance is due February 2, 2023. By paying the deposit, you agree to the Terms & Conditions, Activity Level and Cancellation Policy outlined.

**Discounts:** Early bookers receive \$300 discount on all reservations until May 13, 2022. The discount is not offered after that.

**Cancellation Policy:** Up to November 18, 2022, your tour payments are refunded less a cancellation charge of \$100 per person. From November 19, 2022, to February 2, 2023, the cancellation charge is \$600 per person. From February 3 to March 2, the cancellation charge is 60% of the tour fare. From March 3 to April 3, the cancellation charge is 80% of the tour fare. After April 3, there is no refund.

**Changes to tour:** As this tour has been planned 1½ years in advance, changes to foreign currency exchange rates and taxes, and surcharges from airlines, the cruise ship, and other tour suppliers can occur at any time and are beyond the control of Wells Gray Tours. For these reasons, Wells Gray Tours reserves the right to increase fares due to such changes until departure. Hotels named in the itinerary could change, but substitute accommodation will be of similar quality.

**Travel Insurance:** A Comprehensive Insurance policy is available through Wells Gray Tours and coverage is provided by Travel Guard. Policies purchased at deposit include a waiver of the pre-existing condition clause for medical and cancellation claims, otherwise policies can be purchased no later than at final payment. Please contact us for details.

**Food Allergies:** You must notify us no later than at final payment if you have a food allergy. Off the ship, this tour goes to some restaurants that may not be able to satisfy all food allergies. For some allergies, please consider bringing your own snacks or food items so you are not dependent on what restaurants are able to serve.

**Photo Credits:** Visit Portugal (Douro page 1, Sanctuary), Emerald Cruises (wine glasses, Douro page 3, ship photos page 7), Wikimedia (Carrapatelo Lock, Palace of Queluz, Douro page 5), Mayflower Tours (Salamanca, Douro page 4), Roland Neave (1974 tour)

**Experience Points:** This tour earns 190 e-points. Each time you travel on a Wells Gray tour, you earn Experience Points, or e-points. One point equals \$1. Redeem your points on select tours or accumulate enough points to earn a free tour! Redemptions offered until February 2, 2023.

**Consumer Protection BC Licences:** Kamloops 178, Vernon 655, Kelowna 588, Penticton 924, Victoria 65842

---

KAMLOOPS	KELOWNA	VERNON	PENTICTON	VICTORIA
(Head Office)	2575 Richter St.	3206 35th St.	159 Wade Ave E	102-736 Broughton St.
250 Lansdowne St.	Kelowna, BC V1Y 2R1	Vernon, BC V1T 6B7	Penticton, BC V2A 8B6	Victoria, BC V8W 1E1
Kamloops, BC V2C 1X7	250-762-3435	250-545-9197	250-493-1255	250-590-7889
250-374-0831				

WE PLAN. YOU PACK. NO WORRIES!

[www.wellsgraytours.com](http://www.wellsgraytours.com)

1-800-667-9552