

YUKON NORTHERN LIGHTS

October 2026



Northern Lights

The Northern Lights, otherwise known as the Aurora Borealis, are magical, mystical, and mesmerizing. This tour has four nighttime sessions of Northern Lights viewing with a local guide each evening who will share their Yukon experiences and knowledge. Viewing is outside Whitehorse based at a heated, cozy cabin. This facility is located near some trees for shelter from the wind, yet the northern exposure is over an open field for perfect viewing conditions. Other highlights include a locally-guided tour of Whitehorse, a swim in the Eclipse Nordic Hot Springs, the Beringia Centre, Yukon Museum of Transportation, MacBride Museum, Yukon Wildlife Preserve, and Lumel Studio. There is an option to experience dog sledding! We fly to and from Whitehorse on Air North.



CANADIAN



GROUP SIZE



ACTIVITY LEVEL

► Departure from:

- 📍 **BC Interior:** October 6, 2026 - 6 days
- 📍 **Vancouver Island:** October 6, 2026 - 6 days
- 📍 **Lower Mainland:** October 6, 2026 - 6 days

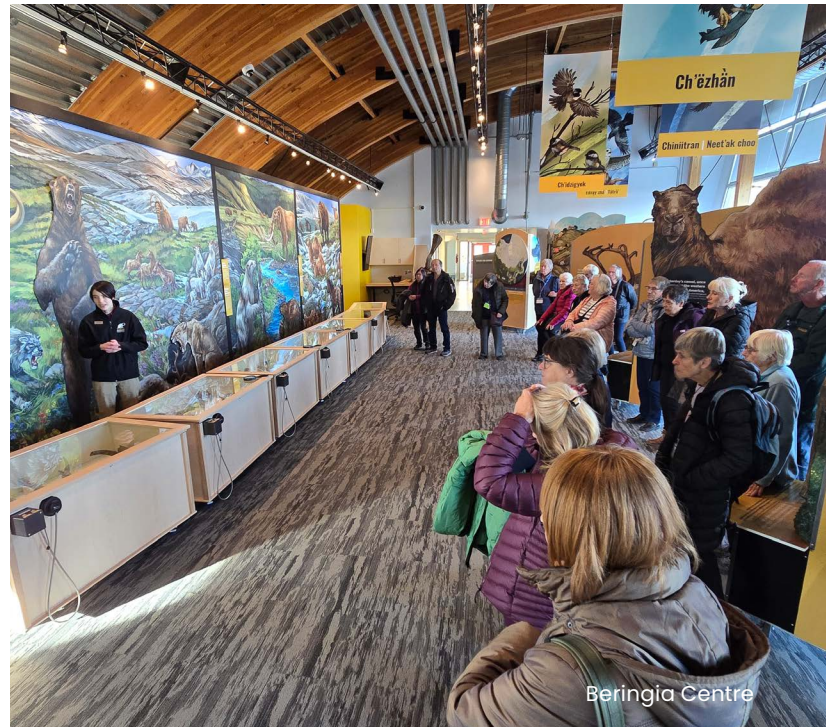
► Fares per person

- 📍 from **\$3,595** double/twin, **\$4,280** single*
- *Pricing details for all departures provided on page 2.*

► Early Booking Bonus

\$150 discount on first 8 seats; **\$75** on next 4.

► Earn 91 Experience Points



Beringia Centre

DEPARTURE INFORMATION

Your departure point will be discussed at the time of booking.

I BC Interior: We fly from Kelowna to Whitehorse with a stop in Vancouver on Tuesday, October 6. We fly from Whitehorse to Kelowna with a stop in Vancouver on Sunday, October 11. Transportation is provided from your pickup point on the day of departure and back again when we return.

V Vancouver Island: We take the ferry from Swartz Bay to Vancouver then fly to Whitehorse on Tuesday, October 6. We fly from Whitehorse to Vancouver on Sunday, October 11, then take the ferry back to Swartz Bay.

Departure from Victoria: Depending on the number of people booked and coach size, home pickups may be offered in the Greater Victoria Area. The decision is made about 2 weeks before departure and you will be contacted about your pickup point and time.

Departure from Up-Island: Flying from and to Nanaimo or Comox Airport to join this tour is not recommended, since a delayed or cancelled flight to Vancouver could mean missing the flight to Whitehorse. Passengers can make their own way to and from Victoria or Vancouver to join this tour.

L Lower Mainland: We fly from Vancouver to Whitehorse on Tuesday, October 6. We fly from Whitehorse to Vancouver on Sunday, October 11.

Departure from Vancouver: Home pickup in the Greater Vancouver Area can be arranged at the time of booking.

Departure from Langley, Abbotsford, or Chilliwack: No transportation is provided to and from Vancouver Airport.

FARES PER PERSON

Departure Point	Fares per Person	Notes
I BC Interior	\$3,595 double/twin \$4,280 single \$3,490 triple	
V Vancouver Island	\$3,755 double/twin \$4,405 single \$3,615 triple	• Please add 5% GST.
L Lower Mainland	\$3,595 double/twin \$4,280 single \$3,490 triple	

WHAT'S INCLUDED

▶ Meals

- **9 total:** 5 breakfasts, 2 lunches, 2 dinners

▶ Transportation

- Transfers between Kelowna or Vancouver Airport & the BC Interior, Greater Vancouver, or Greater Victoria Areas
- Air North flight to Whitehorse
- Current air transport taxes & fees
- 1 checked bag per person
- 5 days of coach transportation in Yukon
- Air North flight to Vancouver or Kelowna

▶ Accommodation

- 5 nights of accommodation & hotel taxes

▶ Highlights

- 4 sessions of Northern Lights viewing
- Locally-guided tour of Whitehorse
- MacBride Museum
- Glass-blowing demonstration at Lumel Studios
- Lumel souvenir
- Yukon Wildlife Preserve
- Eclipse Nordic Hot Springs swim & towel rental
- Yukon Museum of Transportation
- Beringia Centre

Attractions are subject to change. Please see Tour Policies for more information.

▶ Gratuities

- Gratuities to local guides

▶ Knowledgeable Wells Gray tour director

Activity Level 2



Moderate Activity: As a traveller you like a variety of activities and walking up to 2 km with breaks such as on a guided walking tour is very doable for you without assistance. You can stand for prolonged periods in cool night temperatures during the Northern Lights viewing and can climb two flights of stairs without assistance. Please be aware that on tours with flights you must handle your own luggage and walk longer distances in airports. There is no luggage handling service at the hotel.

You may bring a cane or walking poles if needed, but walkers are not suitable for this tour. The coaches cannot carry a scooter or motorized wheelchair. The tour director and driver have many responsibilities, so please do not expect them, or your fellow travellers, to provide ongoing assistance. If you are not capable of keeping up with the group or require frequent assistance, the tour director may stop you from participating in some activities or some days of the tour. In extreme situations, you may be required to leave the tour and travel home at your own expense; travel insurance will probably not cover you.



Tour Size 25

This tour is limited to 25 participants, making it a more intimate travel experience.



Wells Gray Group in 2025 with view of Mount Lorne

ITINERARY

Tuesday, October 6

We fly to **Whitehorse** and stay five nights at the newly-opened Hyatt Place Hotel in downtown Whitehorse. A "Welcome to the Yukon" dinner is planned.

Meals included: Dinner

Accommodation: Hyatt Place Hotel

Wednesday, October 7

A local guide meets us for a drive around Whitehorse including the historic train depot of the White Pass & Yukon Railway, the log skyscraper, log church, the exterior of the sternwheeler *SS Klondike*, fish ladder, and Schwatka Lake. We visit the amazing **MacBride Museum** which has a large collection of relics and photos from gold-rush days, including the log cabin belonging to Sam McGee about whom Robert Service, "Bard of the Yukon", wrote a famous ballad. Next, we visit **Lumel Studios** for a fascinating glass-blowing demonstration. Admire the intricate art with colourful designs and take home a keepsake piece. At 10 pm, we drive out of Whitehorse to the Northern Lights Viewing Facility and settle in for a hopefully awesome spectacle over the next few hours.

Meals included: Breakfast, Lunch

Accommodation: Hyatt Place Hotel

Thursday, October 8

We learn about the native animals at the **Yukon Wildlife Preserve**, a unique 350-acre viewing facility featuring 12 major species of northern mammals such as moose, muskox, mountain goat, wood bison, woodland caribou, elk, lynx, and Dall's sheep, presented in their natural environments. Later, we relax in the soothing waters of **Eclipse Nordic Hot Springs** with temperatures up to 42°C. Tonight is our second night of Northern Lights viewing.

Meals included: Breakfast, Lunch

Accommodation: Hyatt Place Hotel

Friday, October 9

The morning is leisure time. In the afternoon, there is an option for a dog sled excursion (see description on next page). Tonight is our third opportunity for Northern Lights viewing.

Meals included: Breakfast

Accommodation: Hyatt Place Hotel

Saturday, October 10

In the afternoon, we visit the **Yukon Museum of Transportation** which brings vividly to life tales of bush pilots, captains on the Yukon River paddlewheelers, Klondike stampeders on the Chilkoot Trail, and Alaska Highway builders. Next is the acclaimed **Beringia Centre** which tells the story of Indigenous Peoples and animals that lived in a prehistoric land between Alaska and Siberia known as the Bering Land Bridge. Let's hope for a terrific Northern Lights show for our last night.

Meals included: Breakfast, Dinner

Accommodation: Hyatt Place Hotel

Sunday, October 11

A transfer is provided to Whitehorse Airport, then we fly to Vancouver and Kelowna and travel home.

Meals included: Breakfast

OPTIONS

Please choose these options by final payment.

- 1) Husky dog-sledding excursion.** Take a ride behind these friendly huskies pulling a limo sled (on snow or bare ground). Visit a race checkpoint and learn about dog sled history and life as a musher. Includes transportation from the hotel, s'mores, bison smokies, and hot beverages served by the fire. Cost is \$280 per person plus GST.
- 2) Winter gear rental.** If you don't want to pack your own winter clothing, you can take advantage of this convenient service. Includes winter outerwear pants with inner fleece liner, winter outerwear jacket with inner fleece liner, winter boots, insulated mitts, and insulated headgear. Cost is \$215 per person plus GST. Keep in mind that this tour is in October, so extreme cold would be unusual weather. Daytime temperatures typically range from 5°C to 15°C and nighttime lows could go to -10°C. The ground will likely be bare.

THE NORTHERN LIGHTS OR AURORA BOREALIS

The Northern Lights, otherwise known as the Aurora Borealis, are magical, mystical, and mesmerizing. The scientific explanation lies with the sun and the output of energy particles from sun spots. These energy particles, which take the form of free electrons and protons, leave the sun as plasma and create solar wind. When this wind reaches the earth's atmosphere, the contact with atmospheric gases causes the particles to become excited, and this gained energy is emitted in the form of light. The magnetic poles cause the particles to become unstable and concentrated, thereby becoming visible on earth as dancing lights.

Folklore has always surrounded the aurora phenomenon. In Scandinavia, the lights were called 'herring flash', caused by the reflections cast by large swarms of herring onto the sky. Norse legend refers to "the fires that surround the North and South edges of the world", and this has been put forward as evidence that the Norse ventured as far as Antarctica. In Inuit folklore, Northern Lights were the spirits of the dead demonstrating that they don't feel pain anymore, appropriately named Pathway to Heaven. Many prospectors during the Klondike Gold Rush believed that the Northern Lights were the reflection of the mother lode of all gold. Since we are heading to the Yukon, maybe this is the folklore we will adopt as our own!

Whatever the explanation, the sight of the Northern Lights fills one with awe and childlike wonder, like we are witnessing a magical event as curtains of ever-changing light dance across the sky. The best time of year to view the northern lights is in mid-winter when the nights are longest and darkest. Although it is not possible to predict auroral activity very far in advance, chances of viewing increase dramatically when you go out four nights in a row, as on this tour. The most active region of the auroral oval typically becomes visible around local midnight, and the Yukon is also the widest part of the oval in the north-south direction. Our evenings of viewing begin at 10 pm and last 3-4 hours to catch the darkest hours of the night. However, please be aware that the Northern Lights are unpredictable. We have increased odds in every way possible, but there is no guarantee that we will actually witness a spectacular show.

Northern Lights Viewing Facility — Yukon tour operator, Northern Tales, is our host during our time in Whitehorse. Northern Lights viewing activities take place outside the city in a heated, cozy cabin. The facility is located near some trees for shelter from the wind, yet the northern exposure is over an open field for perfect viewing conditions. An outhouse is adjacent. A local guide is with us each evening who shares his/her Yukon experiences and knowledge. Hot drinks and snacks are provided.

TOUR NOTES

Flexible Itinerary: Much of this itinerary is dependent on the weather for the most enjoyment of activities. Therefore, treat this tour as an adventure in travel and allow maximum flexibility for changing conditions. If an activity is cancelled one day due to inclement weather, we will try to reschedule during our stay. We plan to be at the Northern Lights Viewing Facility on four evenings, starting at 10 pm, but cloudy skies could interfere with one or more of these viewings. You can opt out of any of the planned viewings.

Wells Gray Tours cannot guarantee that the Northern Lights will be active any night or every night.

Clothing: Dress warmly, no matter what weather forecast you see for Whitehorse. You will be outside at night watching the Northern Lights and it is easy to get chilled, even if there is a warm cabin to retreat to. Bring a warm coat, warm pants, sweatshirt, sweater, warm underwear, snow boots or hiking boots, toque, and warm gloves. You can also rent your winter gear (see "Options" section on previous page). Keep in mind that this tour is in early October, so extreme cold would be unusual. Daytime temperatures are typically 5°C to 15°C and nighttime lows could go to -10°C.

Flight seating: We are unable to take requests for window or aisle seating on the planes. The airline will not accept them, as group seating is assigned as a block. If this is important to you, we suggest you take the "No Flight" option with a fare reduction of \$325 and book your own flight which allows seat selection.

Flight delays or cancellations: In the event flights are delayed or cancelled by airlines due to weather or other reasons, there may be additional costs to you. Wells Gray Tours will not pay for hotel rooms and meals during the delay. Most travel insurance policies cover expenses incurred for flight delays.

Food Allergies: You must notify us no later than at final payment if you have a food allergy. This tour goes to some remote places where restaurants may not be able to satisfy all food allergies. An allergy causes medical distress, a preference does not. For some allergies, please consider bringing your own snacks or food items so you are not dependent on what restaurants are able to serve.

TOUR POLICIES

Payments: A deposit of \$300 per person is requested at the time of booking and the balance is due August 4, 2026. By paying the deposit, you agree to the [Terms & Conditions](#), Activity Level, and Cancellation Policy outlined. Payments can be made by online banking or cheque (3% discount on tour fare), or by Visa or Mastercard.

Early Booking Bonus: Receive a \$150 discount on the first 8 seats and \$75 on the next 4 seats for booking early with deposit. The discount is not offered after August 4, 2026.

Cancellation Policy: Up to July 3, 2026, the cancellation charge is \$100 per person. From July 4 to August 4, the cancellation charge is \$200 per person. From August 5 to September 4, the cancellation charge is 70% of the tour fare. After September 4, there is no refund.

Itinerary and Fare Changes: Our many suppliers may notify us about changes to the itinerary prior to departure and sometimes during the tour. We do our best to substitute a similar service if something cancels, but occasionally the only alternative is to provide a refund for the missed activity. Please note that if we are forced to cancel a tour component due to an issue beyond our control, the current penalties still apply if you choose to cancel the entire tour. Fuel surcharges and changes to taxes or other tour costs can occur at any time, therefore Wells Gray Tours reserves the right to increase fares due to such changes up to departure.

Travel Insurance: A Comprehensive Insurance policy is available through Wells Gray Tours and coverage is provided by Travel Guard. Policies purchased at deposit include a waiver of the pre-existing condition clause for medical and cancellation claims, otherwise policies can be purchased no later than at final payment. This tour stays in Canada, but medical costs can vary widely from one province/territory to

another. Remember that travel insurance typically provides trip cancellation and trip interruption coverage in case of illness or a mishap before or during the tour. Medical questionnaire is not needed. Please contact us for details. If you have your own travel insurance, please read the policy carefully to be sure that you are adequately covered for medical, cancellation, interruption, and luggage.

Photo Credits: Adobe Stock (Northern Lights), tour director Elvia (Beringia Centre, Wells Gray Group in 2025 with view of Mount Lorne), and Eclipse Nordic Hot Springs.

Experience Points or E-points: This tour earns 91 e-points. Each time you travel on a Wells Gray tour, you earn e-points that are added to your account after the tour returns. One e-point equals \$1. Redeem your earned points on select tours or accumulate enough points to earn a free tour! Redemptions offered until August 4, 2026.

Consumer Protection BC Licences: Kamloops 178, Vernon 655, Kelowna 588, Penticton 924, Victoria 65842

KAMLOOPS

(Head Office)

250 Lansdowne St.

Kamloops, BC V2C 1X7

250-374-0831

KELOWNA

2575 Richter St.

Kelowna, BC V1Y 2R1

250-762-3435

VERNON

3206 35th St.

Vernon, BC V1T 6B7

250-545-9197

PENTICTON

159 Wade Ave E

Penticton, BC V2A 8B6

250-493-1255

VICTORIA

102-736 Broughton St.

Victoria, BC V8W 1E1

250-590-7889

WE PLAN. YOU PACK. NO WORRIES!

www.wellsgraytours.com

1-800-667-9552